

## Golden Circle Village residential complex

Location **Kyrenia, Esentepe**



### About the project BAŞTAŞLAR

Developer **The Cove-Baştaşlar Construction**

Start of sale **2023**

Key handover **2025**

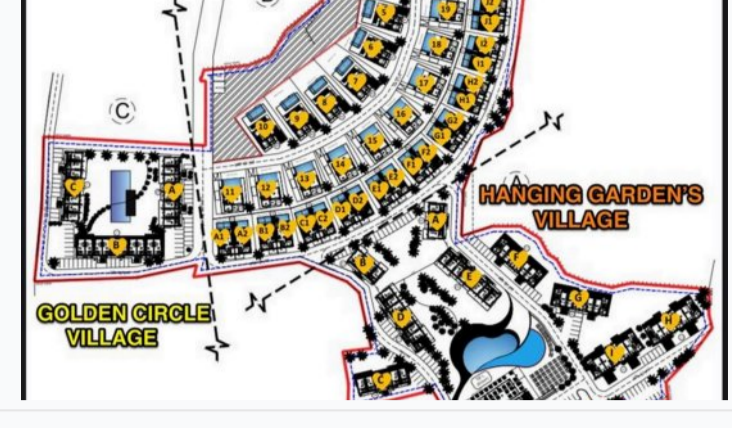
Houses/blocks **3**

Building floor **2** **2**  
Min Max

Units total **26 - Studio, 26 - 1+1**

Distance to the sea - 700 m  
 Distance to key locations:  
 just a short drive from Sun Valley Marina

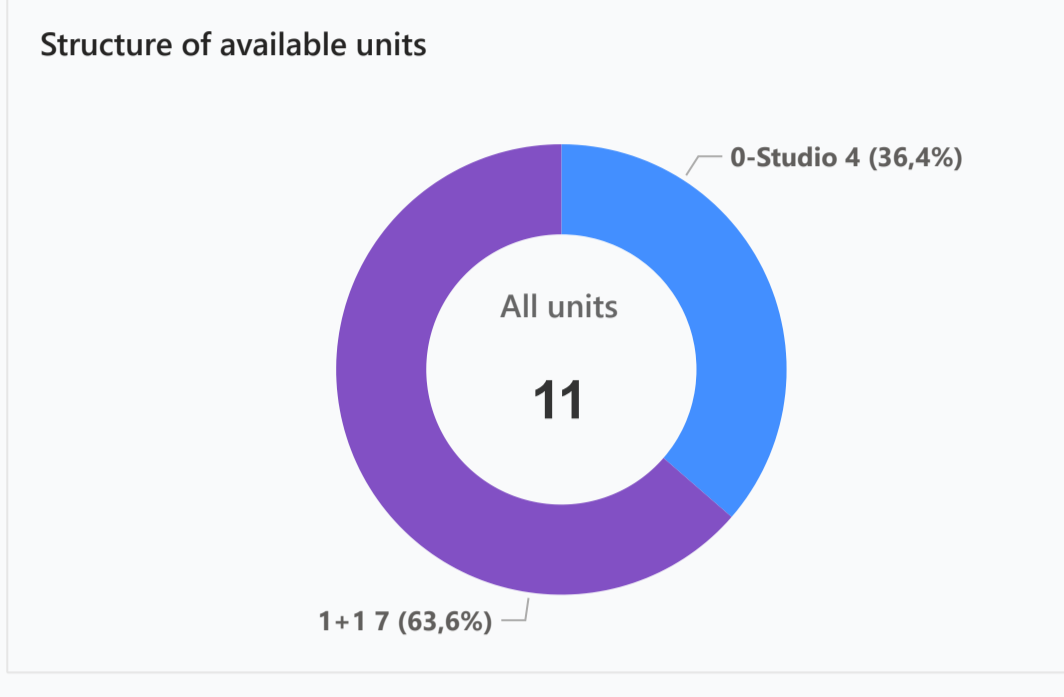
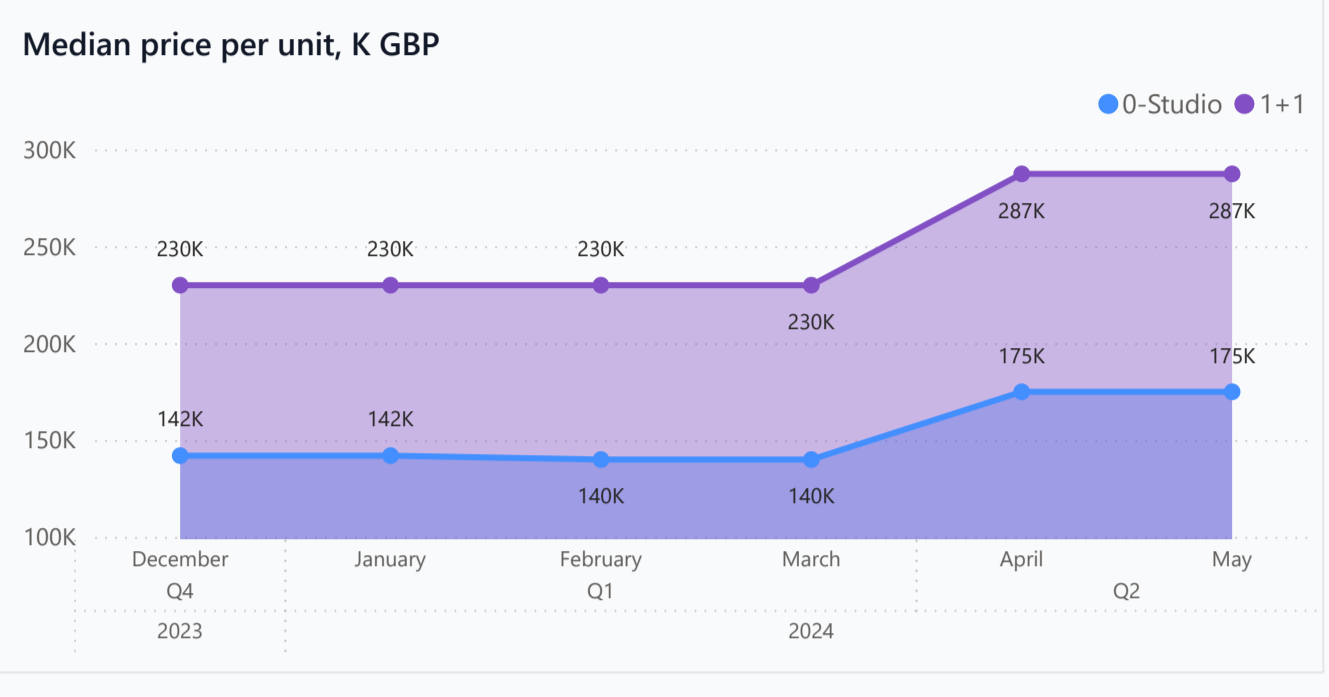
Golden Circle Village is a project located in Esentepe, just a 5-minute walk from the sandy Sun Valley beach, marina, restaurant, bar and tennis courts. The project is based on care for a sense of comfort and peace surrounded by nature. The complex is situated on a mountainside in the popular Esentepe region with stunning sea and mountain views.



### Complex infrastructure

- Bar
- Café
- Central generator
- Closed territory
- Fitness centr.
- Indoor pool
- Kid's playground
- Open pool
- Parking
- Rental office
- Restaurant
- Sauna
- Security Camera System
- Supermarket

### Available units **11** / 52 total



### Plans



### Payment plans **Deposit (non-refundable) 2000 GBP for 2 weeks, 5000 GBP for a mon...**

- | Option   | Down payment | Installments months | Discount | Offer |
|----------|--------------|---------------------|----------|-------|
| Option 1 | 35%          | 65% till key        | -        | -     |
| Option 2 | 35%          | 35% till key, 30... | -        | -     |
| Option 3 | -            | -                   | -        | -     |
| Option 4 | -            | -                   | -        | -     |

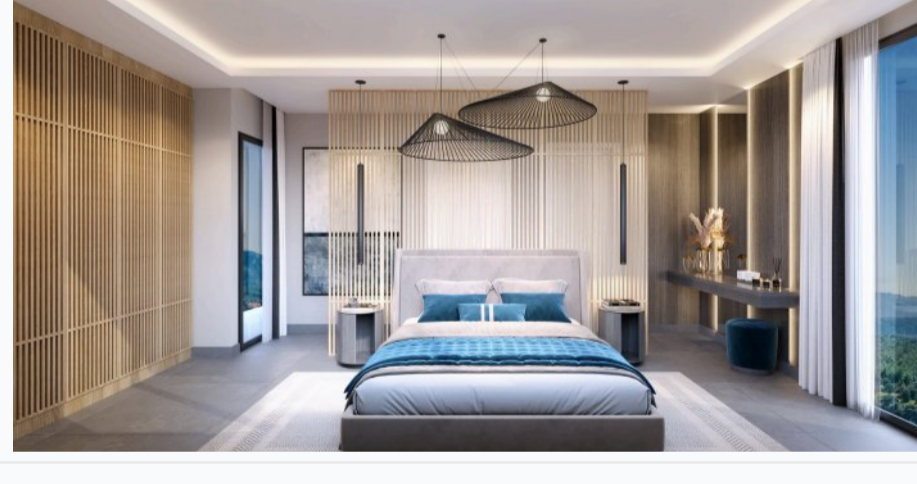
- Special offer: Fully furnished design package
- Rental guarantee

Trafo 2000 GBP | Resale after 35% | Maintenance fee Studio 125 GBP, 1+1 175 GBP, 2+1 and 3+1 225 GBP | Rental services 40%

### Details

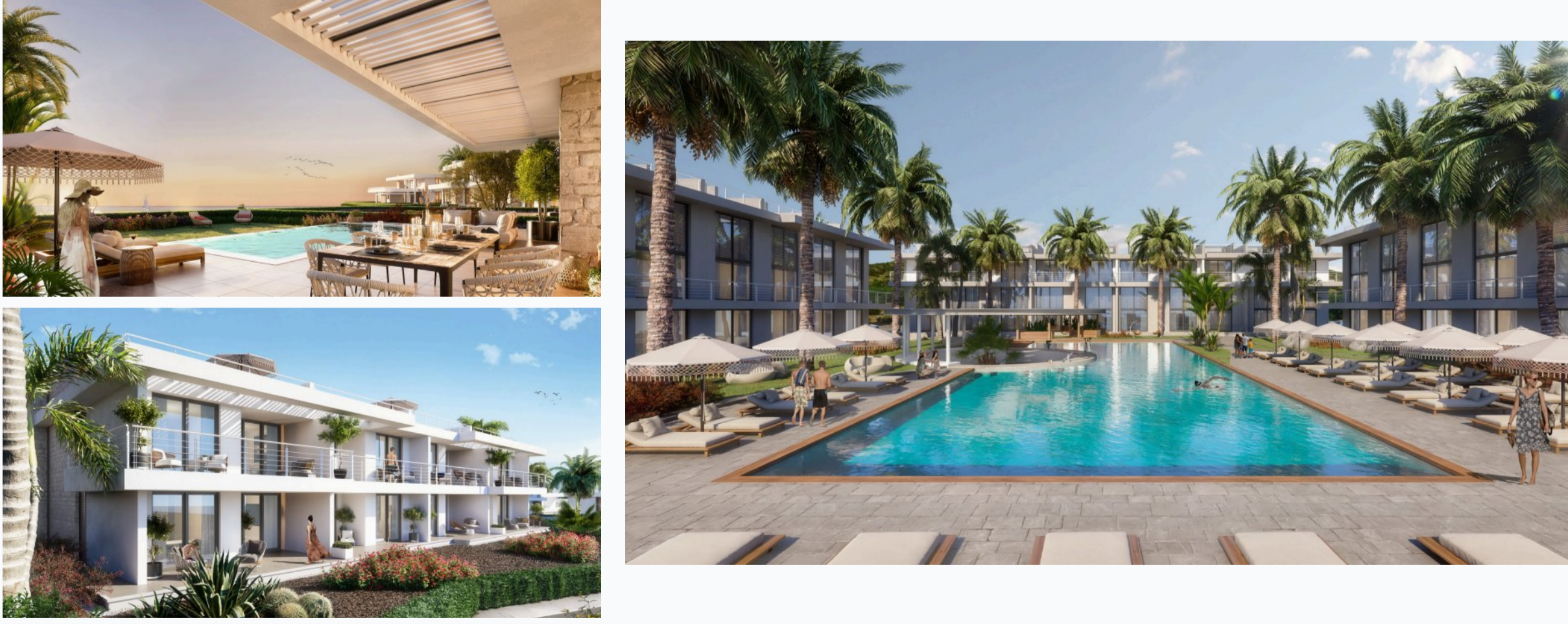
Bedrooms	Subtype	Block	Unit №	Floor	View	Bathroom	Internal area, sq. m	Balcony/Terrace, sq. m	Rooftop terrace, sq. m	Garden, sq. m	Gross covered area, sq. m	Current price, GBP	Price per sqm, GBP
0-Studio	Flat	C	C4	0			42	7			49	174 875	3 569
0-Studio	Flat	C	C5	0			42	7			49	174 875	3 569
0-Studio	Flat	C	C6	0			42	12			54	174 875	3 238
0-Studio	Flat	C	C7	0			42	12			54	174 875	3 238
1+1	Loft	A	A12	01			62	7	30		99	287 375	2 903
1+1	Loft	A	A10	01			62	12	30		104	284 875	2 739
1+1	Loft	B	B1	0			72	16			88	337 375	3 834
1+1	Loft	C	C10	01			62	12	30		104	287 375	2 763
1+1	Loft	C	C11	01			62	12	30		104	287 375	2 763
1+1	Loft	C	C14	01			62	12	30		104	287 375	2 763
1+1	Loft	C	C15	01			62	12	30		104	287 375	2 763

### Interior specification



- Air Conditioner
- Ceramic flooring
- Double glazed windows
- Natural marble or travertine window sill

### Exterior specification



- Private Garden
- Private pool
- Terracing with inbuilt lighting & power sockets

### Location of complex

